

Software Required:

- LinkMaster installed on a machine that has access either locally or remotely, to the target OPC servers
- The 2 OPC servers for the two different types of hardware you wish to move data between

Installing LinkMaster

- Run the setup.exe found in the Disk1 folder inside of the LinkMaster folder on this CD. This will install LinkMaster and then also install the Event Viewer.
- Event Viewer may be separately installed from the EventViewer folder on this CD.

Unlocking LinkMaster

- Until you unlock the LinkMaster product after installation the product will run in demo mode as described below.
- To unlock the driver, run LinkMaster and select Help→Purchase a Driver License. Enter the serial number shown on the license envelope your software was delivered in.
- Then select Help→Unlock a Licensed Driver from the LinkMaster menus and contact Software Toolbox Inc. at 704-849-2773 with the computer ID and your serial number to obtain your unlock password.

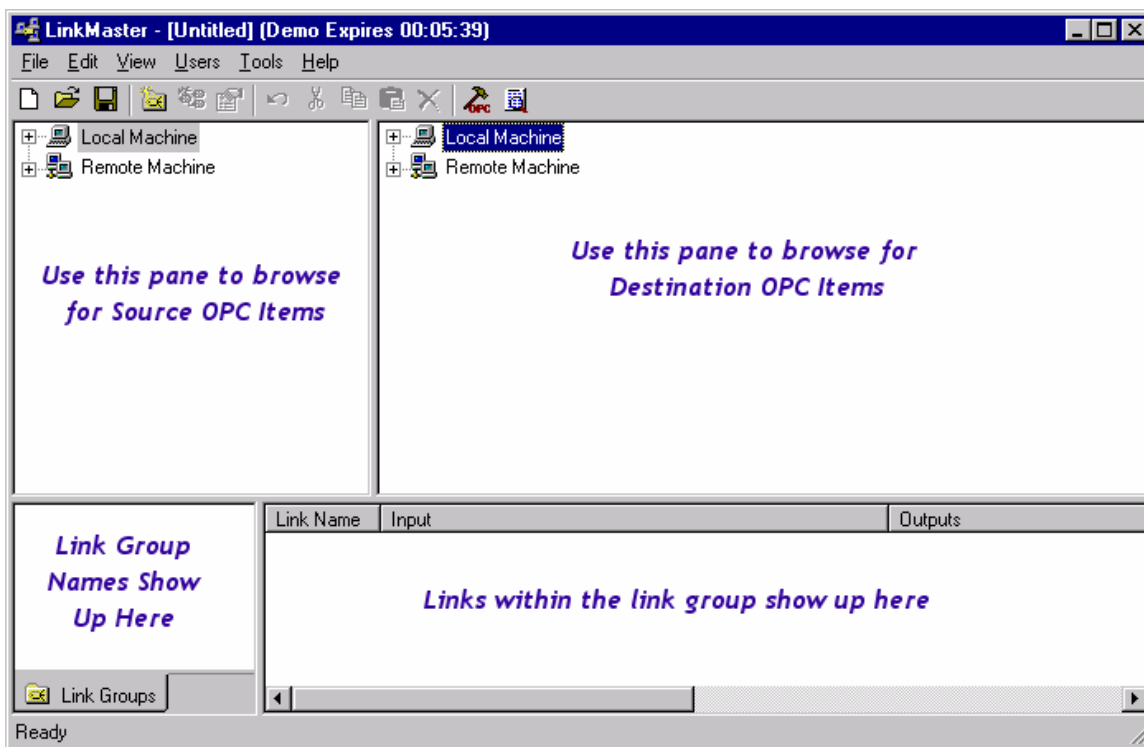
Demo Restrictions:

- There are no restrictions on the number of tags you can link with LinkMaster and you can save off your configuration for use with a licensed copy of the product
- The demo times out after 2 hours and stops communicating, restarting the demo gives you another 2 hours



Steps to get basic data mapping going between 2 servers:

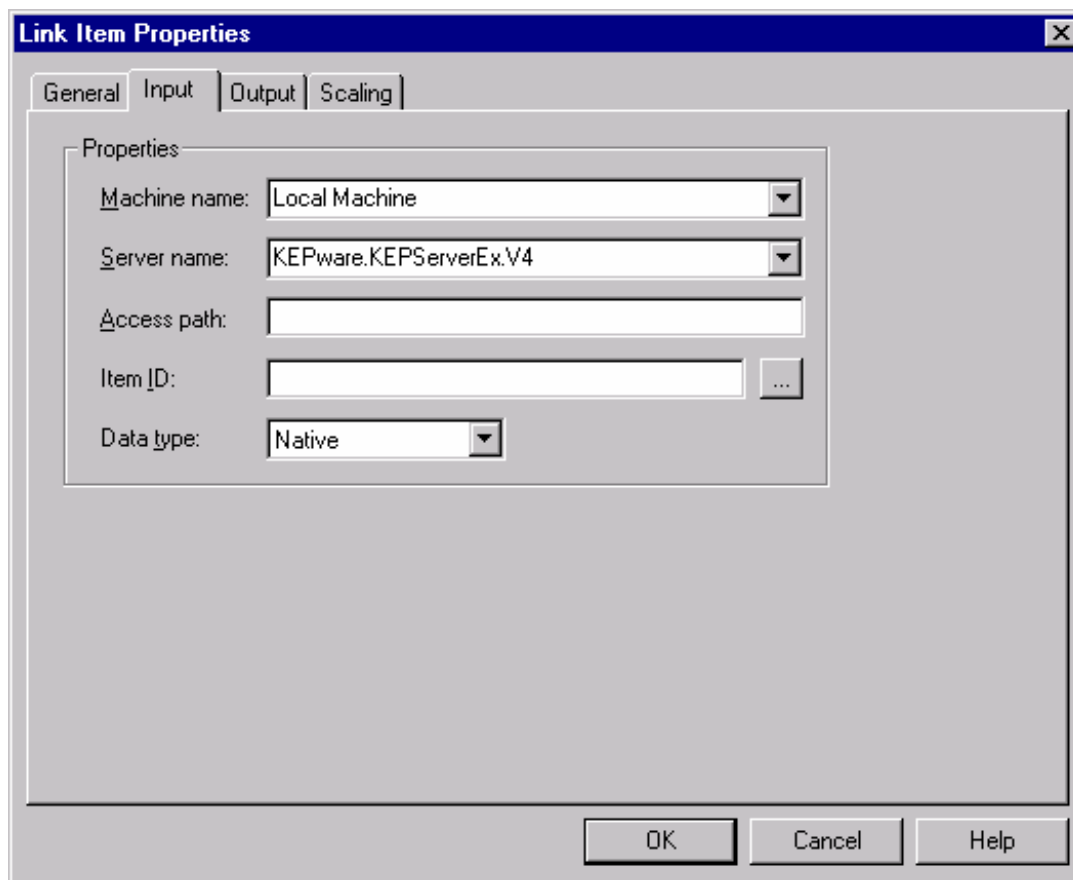
1. Run LinkMaster – the window shown below appears:



2. Click Edit→New Link Group and create a group – you will see the group name appear in the lower left pane of the LinkMaster screen
 - a. You use multiple groups to control the update rate – all items in a single group are updated at the same update rate
 - b. You can also enable/disable transfers of data on a group by group basis from the group properties page
 - c. Update Rate – sets the minimum rate at which we'll tell the OPC server that is the input device to send data up to LinkMaster
 - d. Refresh Rate – if your application requires the writes to go out whether the values have changed or not you need to set this to the update rate you want on the output OPC server. If this is set to 0 writes to the output OPC server automatically a new input value is received.
3. You have 2 ways you can setup items for mapping between the OPC servers
 - a. You can select a tag in the 2 upper windows and drag and drop –
 - i. if you drag from left to right the tag on the left is the *input* and the tag on the right is the *output*
 - ii. if you drag from right to left the tag on the right is the *input* and the tag on the left is the *output*
 - iii. Whichever way you drag you will see the link appear in the group you setup in step 2.



- b. You can click Edit→New Link and in the resulting dialog you can configure the mappings of input to output



- i. This method has the advantage of allowing you to map 1 input tag to multiple output tags from the start. You can also go back and do this AFTER you have made a link with the drag-n-drop method by simply selecting the link in the bottom right window on the screen and right clicking on it, and selecting Properties on the resulting dialog. From the Outputs tab you can then add additional output links as well as setup scaling transformations for the data.
4. Testing – to test we advise that you get an OPC client connected up to each OPC server and write data into one and then see it appear in the destination. The OPC Quick Client that is installed with the LinkMaster install can be used to connect to multiple OPC servers simultaneously.
 5. Event Viewer – you can start EventViewer and then connect to the copy of LinkMaster running on your machine and monitor the activity on the Linkmaster for troubleshooting and to see historically what has happened while LinkMaster was running.





LinkMaster Quick Start

Support:

Software Toolbox Inc.

148A East Charles Street

Matthews NC 28105

Phone: (704) 849-2773

Fax: (704) 849-6388

Email: support@softwaretoolbox.com

WWW: <http://www.softwaretoolbox.com>

